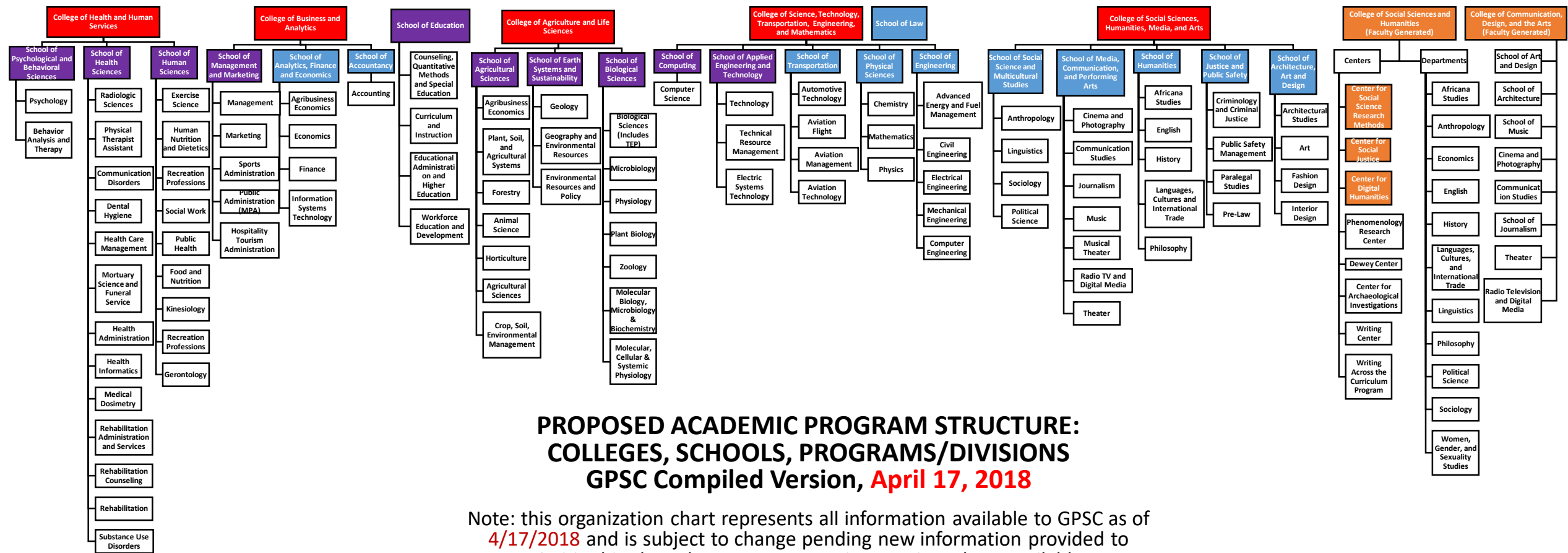


GPSC COMBINED REORGANIZATION OVERVIEW FOR DISCUSSION PURPOSES ONLY

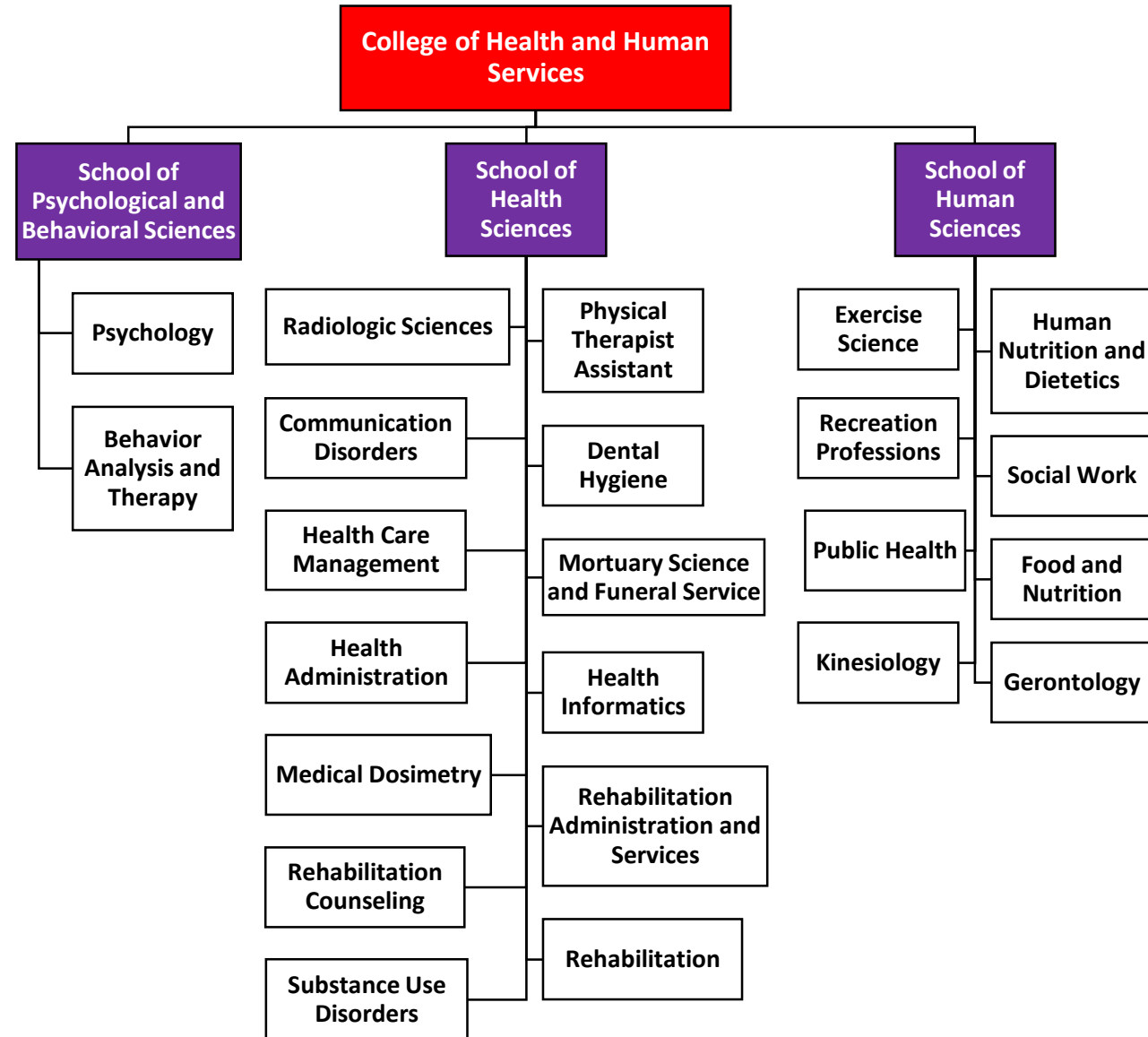
Note: this organization chart represents all information available to GPSC as of **4/16/2018** and is subject to change pending new information obtained by GPSC.

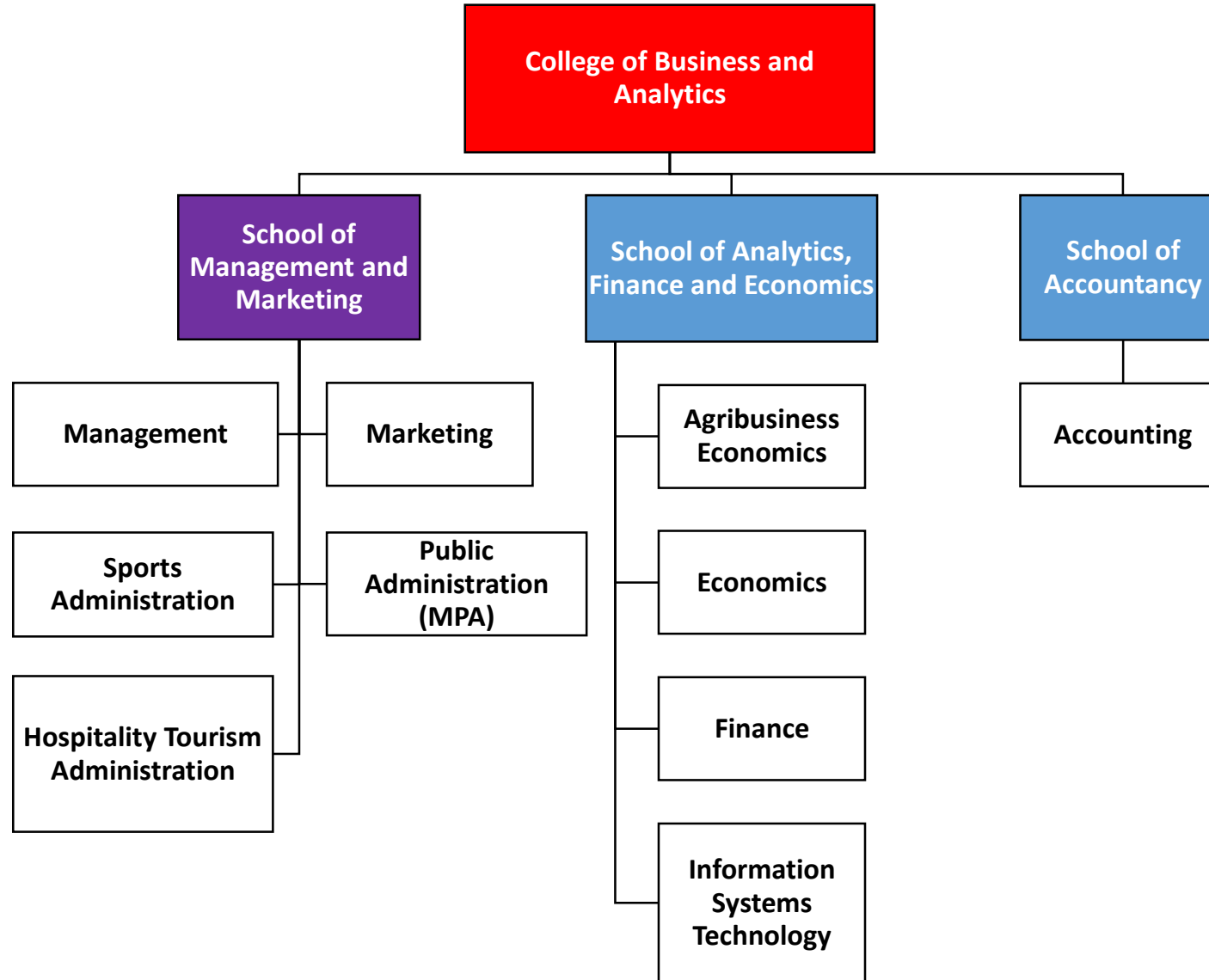


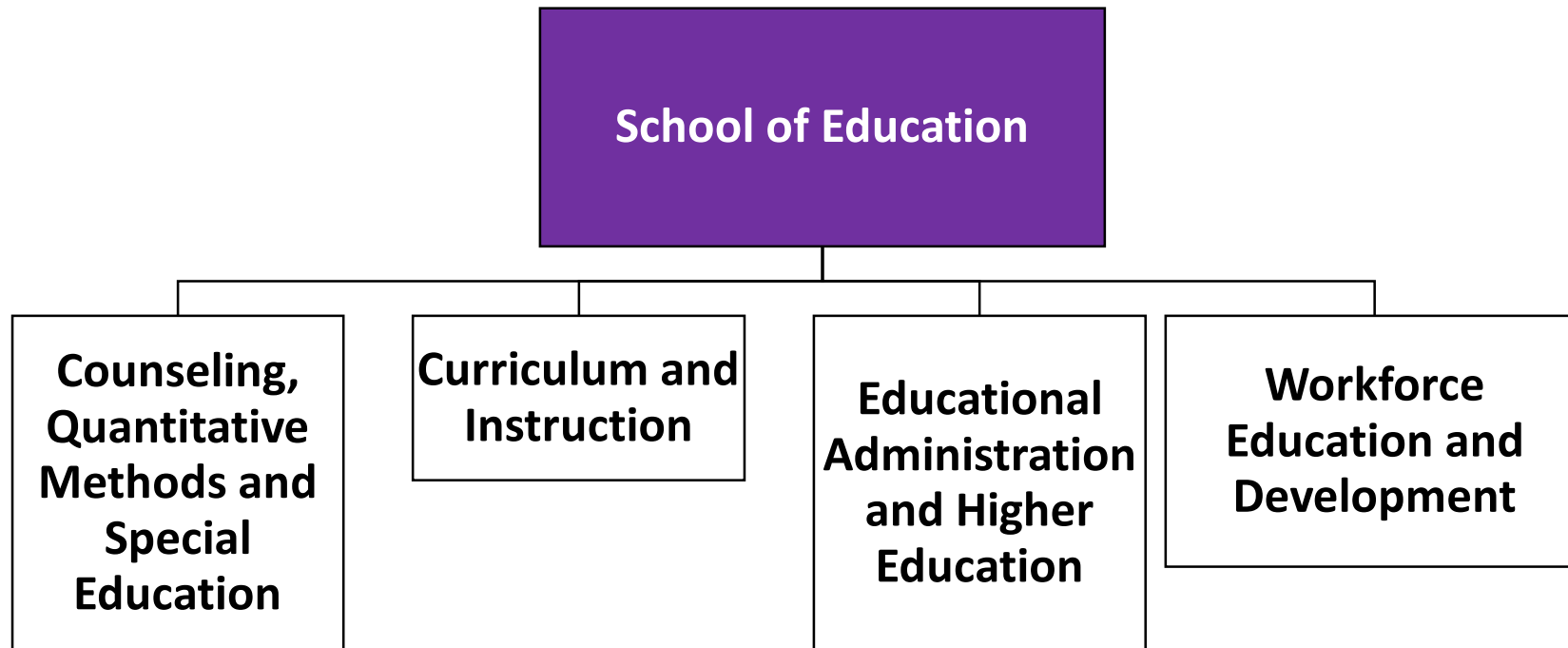
**PROPOSED ACADEMIC PROGRAM STRUCTURE:
 COLLEGES, SCHOOLS, PROGRAMS/DIVISIONS
 GPSC Compiled Version, April 17, 2018**

Note: this organization chart represents all information available to GPSC as of 4/17/2018 and is subject to change pending new information provided to GPSC. This chart draws on program inventories where available

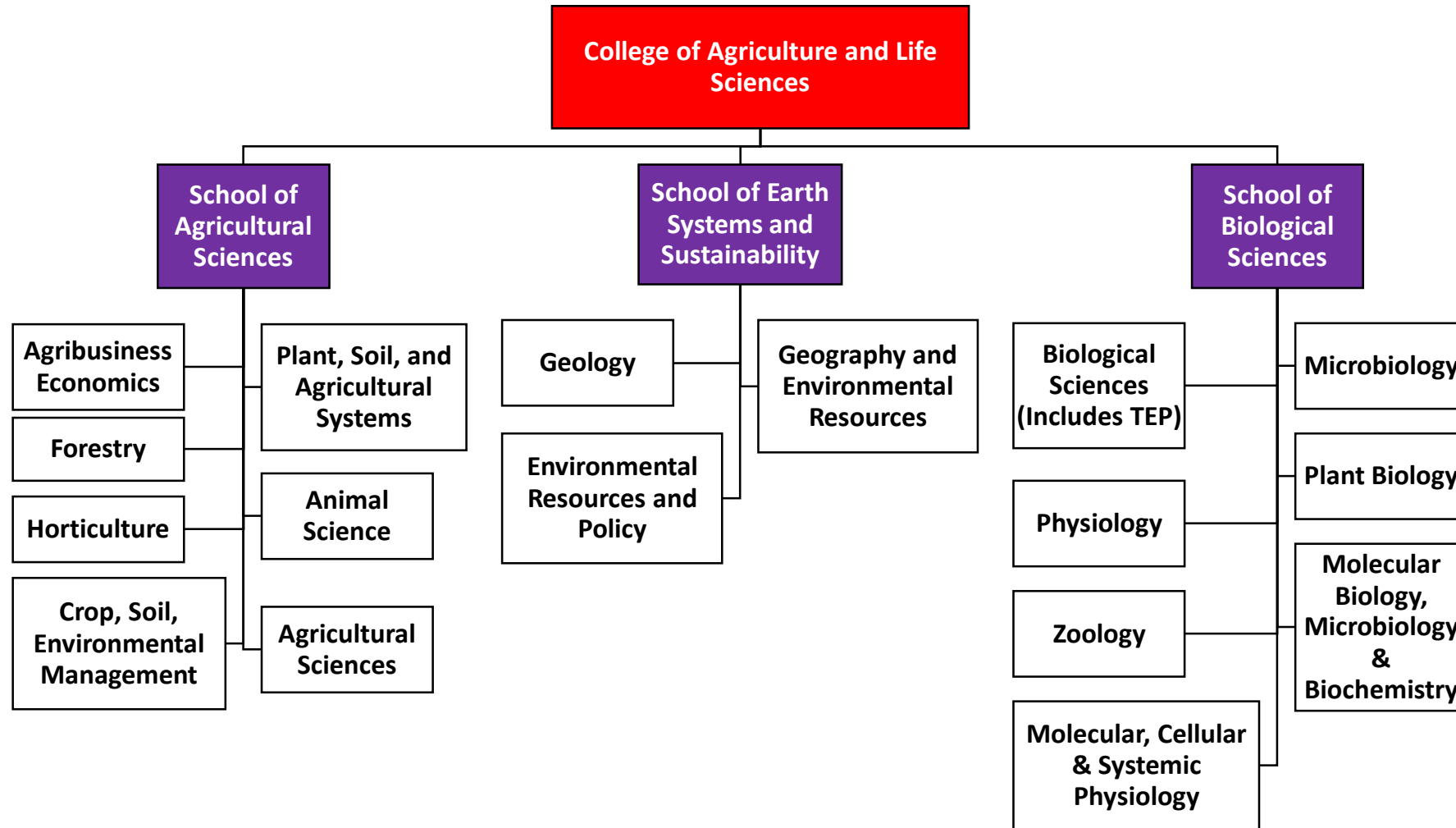
This chart uses the following color code: Purple, for programs that have updated proposals. Blue for programs that do not have updated proposals. Orange for faculty generated proposals

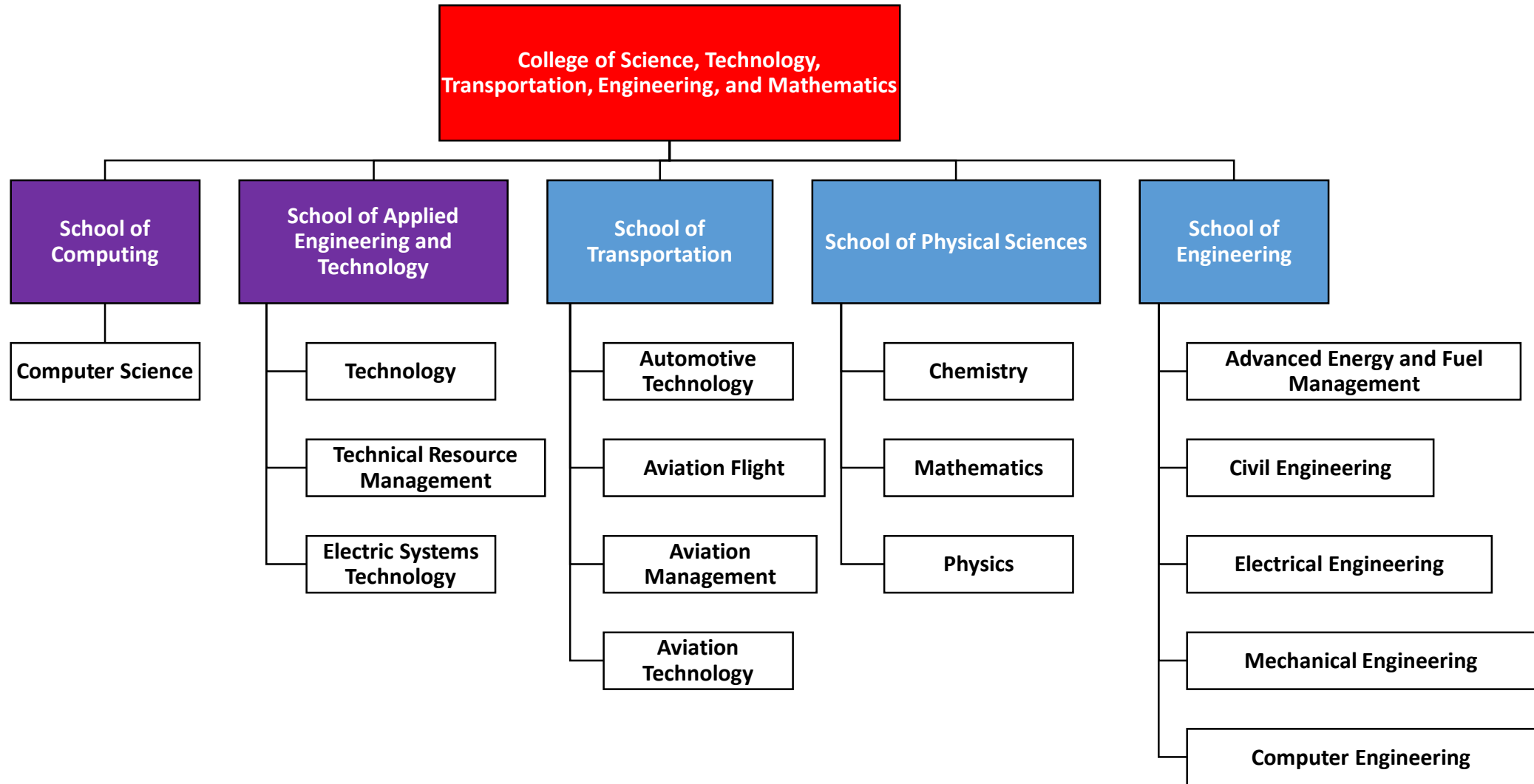


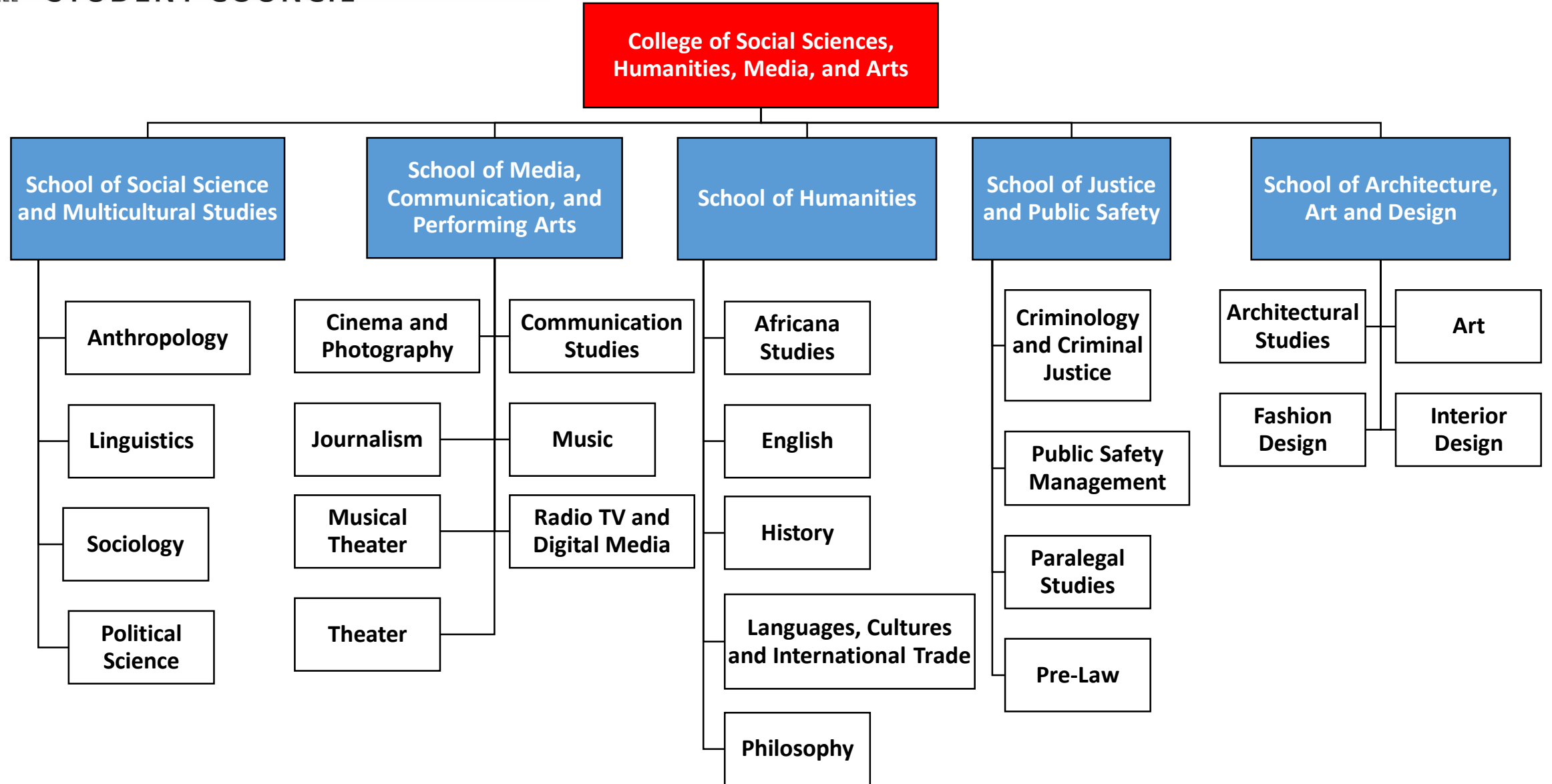


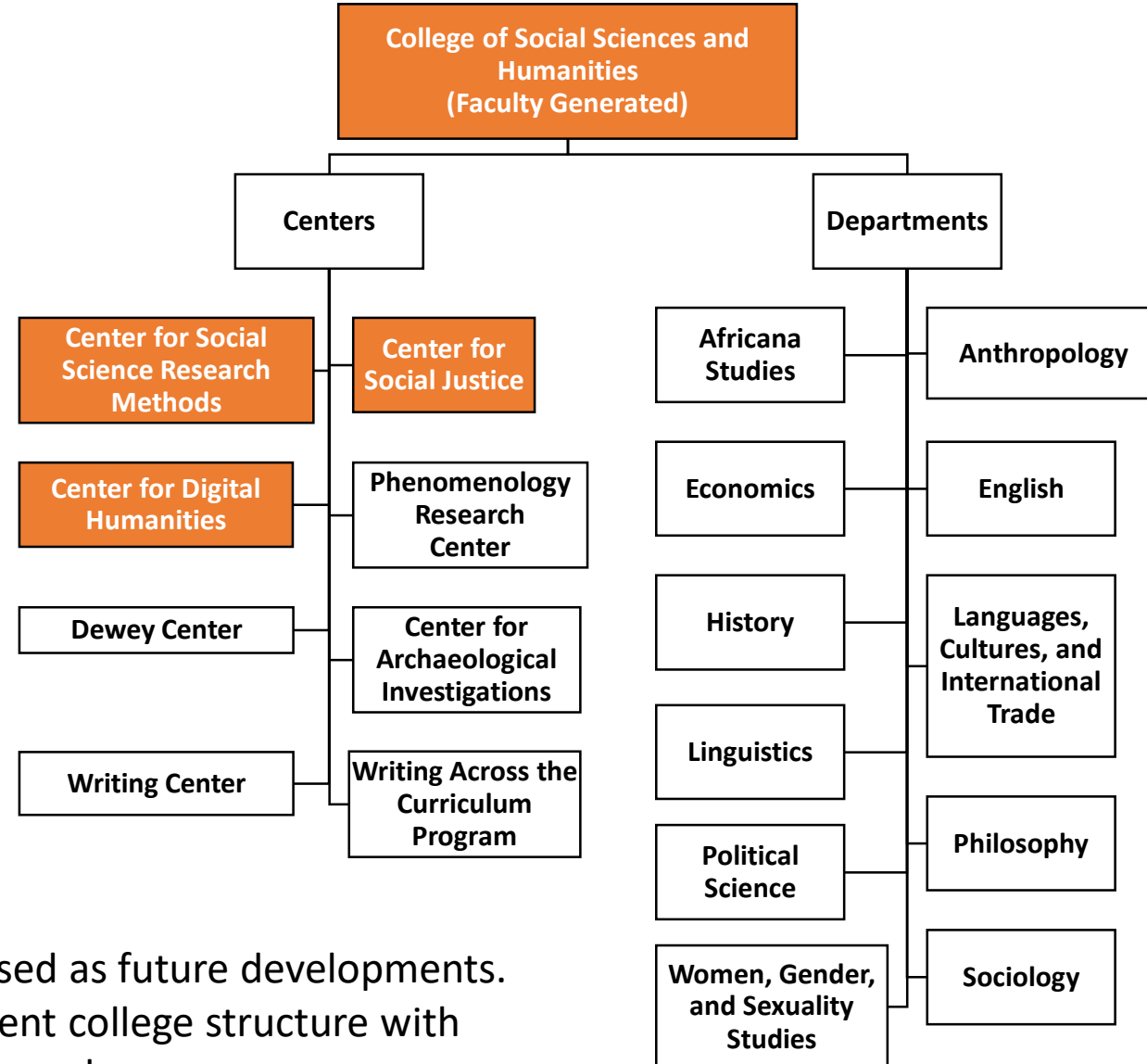


Note: The School of Education is the only School subject to the reorganization that will have its own dean. Units within the School will still be “divisions,” and there will be no school director.

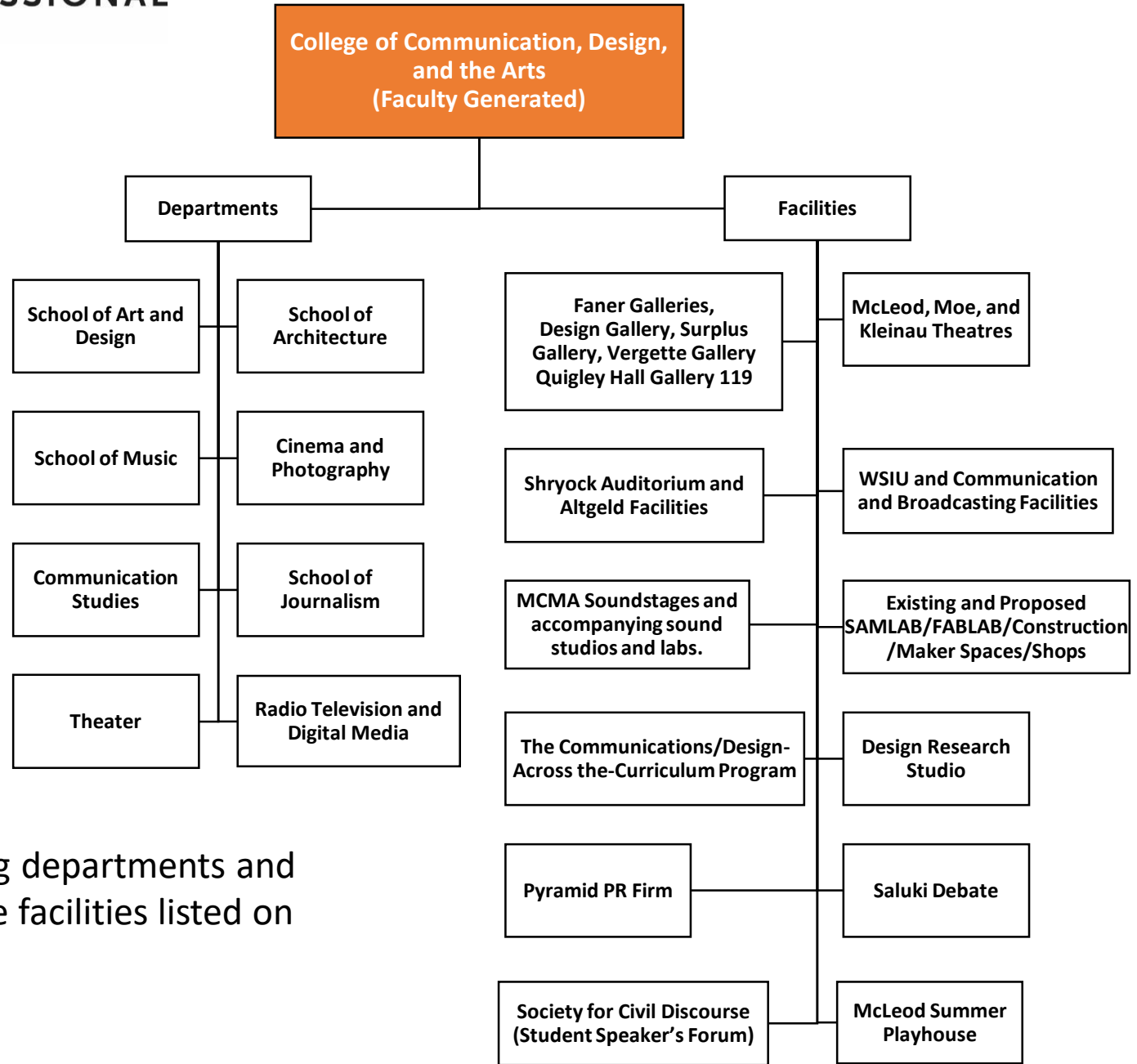








Note: the centers in orange are proposed as future developments. This proposal would preserve the current college structure with department chairs who would report to a dean.



Note: This proposal preserves existing departments and retains departmental control over the facilities listed on the right.